

# Meandering through the Somme Valley

*Walking trails between Abbeville and Pont-Rémy*



Can be accessed from the railway stations of Abbeville and Pont-Rémy



- Explore the valley along almost 110 km of trails
- Leading through 15 villages

The Conseil départemental de la Somme invites you to discover the Somme Valley at your own rhythm along the Department's many walking trails.

Create your own walking and cycling itineraries through the Somme Valley depending on the distance you would like to cover and the places you would most like to see!

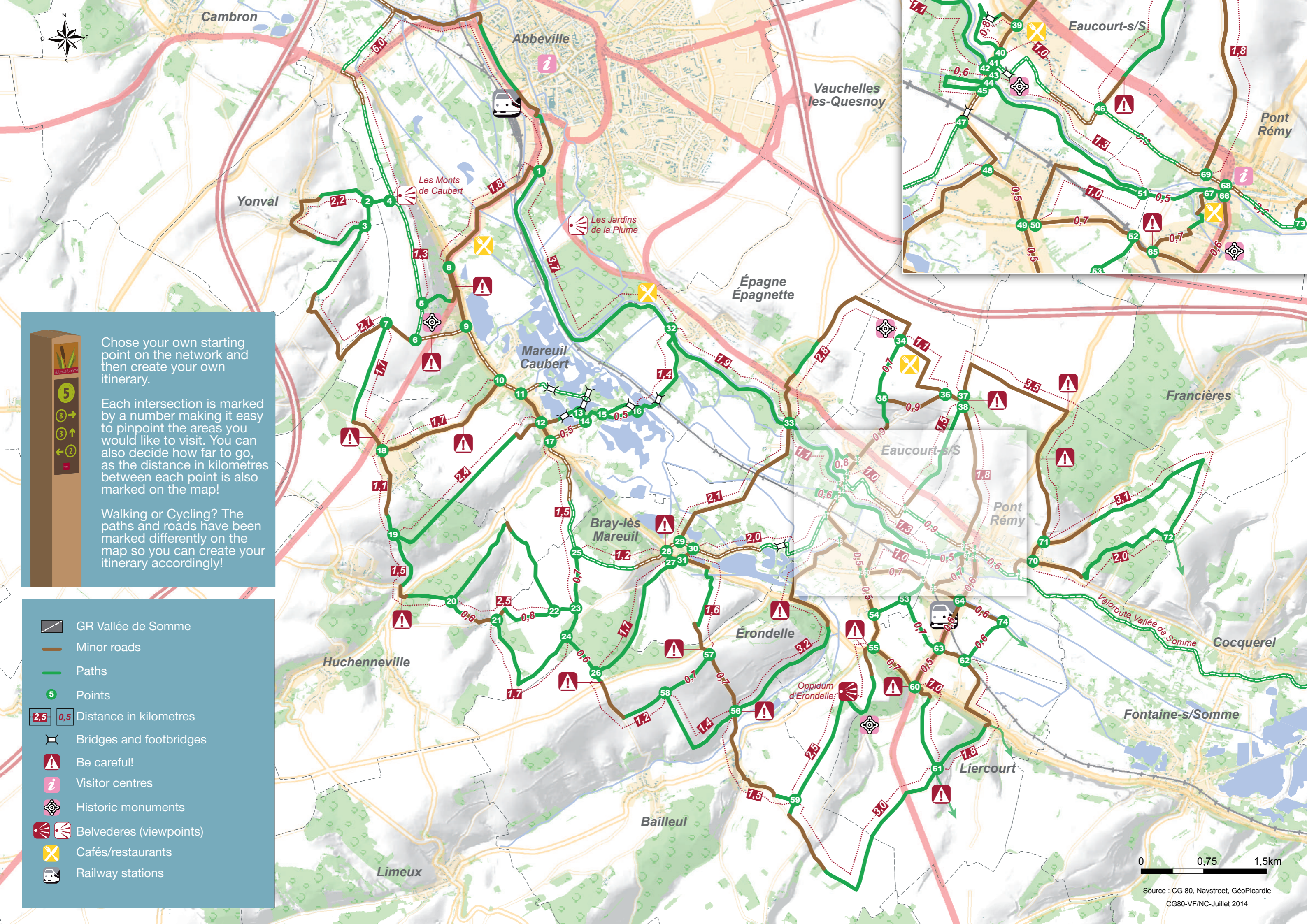
Come and visit ruined castles or marshlands humming with wildlife, take in the superb panoramic views that can be admired throughout the valley and enjoy the great wealth of natural and historical heritage to be found in these peaceful habitats!

For more information, please visit [vallee-somme.com](http://vallee-somme.com) or download the Somme Balade application.

la Somme

espace naturel de rencontres





Chose your own starting point on the network and then create your own itinerary.

Each intersection is marked by a number making it easy to pinpoint the areas you would like to visit. You can also decide how far to go, as the distance in kilometres between each point is also marked on the map!

Walking or Cycling? The paths and roads have been marked differently on the map so you can create your itinerary accordingly!

- GR Vallée de Somme
- Minor roads
- Paths
- Points
- Distance in kilometres
- Bridges and footbridges
- Be careful!
- Visitor centres
- Historic monuments
- Belvederes (viewpoints)
- Cafés/restaurants
- Railway stations





To find out more  
[www.somme.fr](http://www.somme.fr)  
[www.vallee-somme.com](http://www.vallee-somme.com)

## Full of hidden treasures! .



The Saint Christophe Church at Mareuil-Caubert, the Blue Sources at Erondelle, the remains of Pont Rémy Castle, the Bray-sur-Mareuil Chapel and the Epagnette Chateau.... all can be seen from the tow path: there really is something for everyone!

### Eaucourt Castle

This 13th century mediaeval castle has long guarded the crossing over the River Somme. Today, its remains are brought to life by an association who are in the midst of carrying out restoration work and who open it to the public during the summer months.

More information : 00 33 (0)3 22 27 05 32. Point 43

### Eaucourt Windmill

This 17th century windmill was nicknamed Guidon (Glider in English) because sailors used it as a navigation point to enter the Somme Bay. The spire of Amiens Cathedral could even be seen by looking east! It was restored to working condition by a local association.

More information: 00 33 (0)689437224  
 Point 35



### Liercourt-Erondelle oppidum

Interpretation tables enable you to discover one of the most important Roman military bases of Northern France built by Roman legionnaires in approximately 40 BC. It also makes an excellent place to admire the panoramic views over the Somme Valley.

Between points 55 and 59



### The Rouissoirs Brooks

Flax stems used to be "retted" in these ditches: they were dipped in the water to soften the stems and remove the fibre. The brooks were naturally named after the French word for the process.

Between points 44 and- 45



### The Caubert Hills

In ancient times, an oppidum was set onto these hills, which were also a theatre of war during the Battle of Abbeville in 1940. Today, they provide superb panoramic views of Abbeville and the Somme Valley.

Point 4



Snake's head fritillary

### The Mareuil-Caubert Ponds and Marshlands

Rare and fragile species of fauna and flora inhabit this area including bluethroats, kingfishers and snake's head fritillary.

Points 13 to 16



### Archaeological and Historical Reconstructions

The Ambiani Association is specialised in Gallic reconstructions. It recently reconstructed a Gallo-Roman ship yard at Pont Rémy, where it rebuilt a river boat named Abugnata (daughter of the river). During certain events, this boat can be seen sailing along the river.

Between points 68 and 73



© Jane Trouvé

### The Epagne-Epagnette Marshlands

This area lets you admire the characteristic fauna and flora of the marshy peat bogs: large marsh grasshoppers, snake's head fritillary and even stalks on occasion! Nature outings are organised by the Conservatoire des Espaces Naturels de Picardie. (Bookings at 00 33 (0)3 22 89 84 29)

Or with nature guide Marie Heuze (Bookings at 00 33 (0)6 45 58 96 65)  
 Point 32

### Electric boat hire

Hire electric boats at the Pont Rémy Tourist Office. No licence is needed to navigate these boats and they enable you to enjoy the river in a different manner. They can be hired by the hour, the day or half-day, whatever suits you best!

More information and bookings at 00 33 (0)3 22 27 20 71  
 Or visit point 68



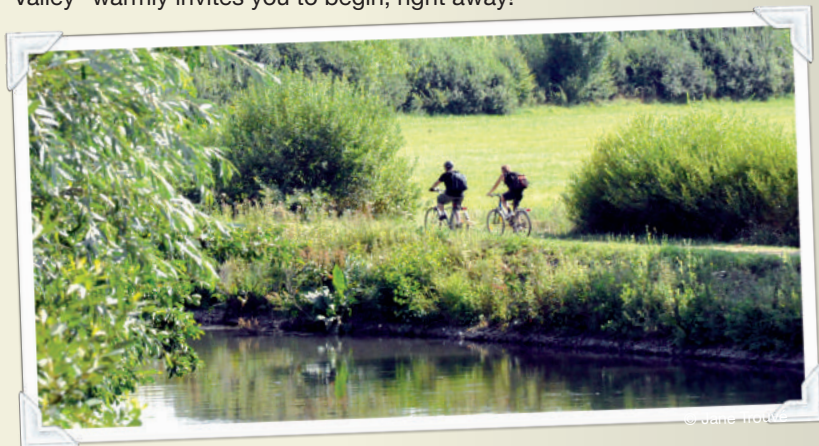
### To continue your meanders through the Somme...

Follow the Somme Valley Cycle Route or the GR Vallée de Somme® and travel from Péronne to Saint Valéry alongside the river. From this route you will also be able to join other walking or cycling itineraries such as: the Around the Water walk through the heart of Abbeville; the Ponthieu Crossing, bringing you to the Authie Valley along the old railway track; and the Longpré-Oisemont cycle route, which departs from the Maison des Marais at Longpré and which leads you to Vimeu.

# The Somme, a river to share

The Grand Projet Vallée de Somme (GPVS) is a sustainable project initiated in 2009 by the Conseil départemental, which has been developed both with and for the inhabitants of the Somme.

It invites the population, three quarters of whom live in the valley, to participate with a beautiful human adventure and reflect upon the future of their territory. The GPVS thus supports the river, a heritage of which the inhabitants can be proud. The Conseil départemental is making improvements along the river so that each and everyone can enjoy the waterway. A memorable experience that “Meandering through the Somme Valley” warmly invites you to begin, right away!



## The countryside is beautiful and accessible to all, please respect it!

Please respect those you meet who are also enjoying the area or who live or work here.



Nature has a long history, one mistake and you could end it all.



Nature is vulnerable; a simple spark could cause a catastrophe.



Nature needs to breathe, choose appropriate places to set up camp.



Nature is beautiful; protect it by taking your rubbish away with you.



Nature is fragile, especially small animals, keep dogs on leads.



Nature is generous; protect it by keeping to the paths.

The network of trails combines rural tracks and municipal paths maintained by the surrounding villages. When parts of the trail are included in the Departmental Network Itinerary, a partnership exists with the Communautés de Communes. The Somme Valley Cycle Route is completely maintained by the Conseil Départemental. The GR Vallée de Somme© has been created by the Fédération Régionale de Randonnée Pédestre.

## For more information...

Somme Tourisme

03 22 71 22 71 - [somme-tourisme.com](http://somme-tourisme.com)

Maison de la Somme

Place Notre-Dame à Amiens

03 22 97 20 20 - open every day

Pont Rémy Tourist Office

03 22 27 22 64

Abbeillois Tourist Office

03 22 24 27 92

[www.abbeville-tourisme.com](http://www.abbeville-tourisme.com)

The trail network is an experiment conducted by the Conseil départemental, please send us your comments and suggestions: [contact@somme.fr](mailto:contact@somme.fr)

