



D Starting point

P Car park opposite the church

- 1 Take the Rue du Mail to the trail situated between n° 33 and 37
- 2 Turn right
- 3 Turn around and come back the way you came
- 4 Turn right
- 5 Turn left
- 6 Turn left and walk around the pond until you are back at the starting point.

i Information point

⚠ Be careful:

This is a fragile site and is the object of a prefectural order to protect the biotope. Please stay on the paths and keep animals on leads. The site is closed during the hunting period (displayed at entrance).

Protect the natural environment
To help with the conservation of the rich natural habitats of this fragile site, please:

- . Always use the marked trails
- . Respect the fauna and flora
- . Take your litter away with you
- . Always keep dogs on leads

This trail is maintained by the Conservatoire d'Espaces Naturels de Picardie

For more information:

- Tourist Office: Amiens métropole : 03 22 71 60 50 www.amiens-tourisme.com
- Somme Tourist Board: www.somme-tourisme.com
- www.somme-nature.com

Managers of the site:
Conservatoire d'espaces naturels Picardie



La Somme

The Great Marshlands of the Queue

Blangy-Tronville,
6km from Boves,
11km from Amiens

Close to Amiens, the capital city of Picardy - follow this trail step by step, and discover a former peat bog made up of marshlands, ponds and wooded areas. Step into the heart of the wetlands...



D Starting at: Car park opposite the church at Blangy-Tronville

🕒 Time: 45 mins

🔄 Distance: 1,6km

🕒 Route: very easy

- ▶ Spring
- ▶ Summer
- ▶ Autumn
- ▶ Winter

Written by: Nathalie Saillard - Design: L'Agence par A Propos
Updates and printing: imp. Cg60 - Translation: C. Carrel - Summer 2012

This leaflet was created by the Somme County Council
43, rue de la République - 80026 Amiens cedex 1
03 22 71 80 80
www.somme.fr





The Great Marshlands of the Queue at Blangy-Tronville

At Blangy-Tronville, close to Amiens, the Great Marshlands of the Queue offer an extraordinary natural palette to those who are inquisitive. This former peat bog, managed by the Conservatoire d'Espaces Naturels de Picardie, is today composed of wooded areas, marshlands and ponds where the fauna and flora thrive. Keep your binoculars ready, follow the nature trail and let yourself be seduced by Mother Nature...



Eric Guéant, Mayor of Blangy-Tronville
 "The marshlands of Blangy-Tronville are a jewel that the municipality endeavours to protect with the support of the Conservatoire. A nature trail allows you to discover the exceptional fauna and flora of Picardy. It will perhaps allow you to see the very rare Fen Orchid (a protected orchid) or one of the 34 different types of dragonfly that live in the marshlands. Without the constant work carried out by the Conservatoire or by local associations, this paradise would certainly be in danger of disappearing..."

About the site

- > **Proprietor:** Municipality of Blangy-Tronville
- > **Size:** 14.9ha
- > **Managed by:** Conservatoire d'Espaces Naturels de Picardie
- > **Maintenance partners:** Municipality, Hunting Society, Lycée Agricole de Parcelet
- > **Financial partners:** Europe, State, Regional Council of Picardie, Somme County Council, Amiens Métropole, Agence d'Eau Artois-Picardie.

A walk through the wetlands...

At the bottom of the Somme Valley, shadowed by the chalky plateaus of Picardy, the Great Marshlands of the Queue are a former peat bog: peat was extracted here until the 1950's. The starting point of the walk is situated in the church car park. Take the Rue du Mail, which will take you to the entrance of the site between the house numbers 33 and 37. A reception panel will invite you to follow the trail to the right. By walking to the Lapierre Pond you will discover the characteristic landscapes of the marshlands: birch woods, willow thickets, wet fallow land, etc. From the banks of the Lapierre Pond, you will see floating plants: a good indicator of the quality of the water. Much floating vegetation



The Greater Spearwort is a large buttercup which grows to more than a metre high. It is a protected species by law. Wood clearance work has benefited this familiar plant of the marshlands.

is visible at the surface of the water, close to the banks. **Be careful: these "natural mattresses" are not stable and cannot support the weight of a person.**

You will now need to turn around and come back. As you pass by the information panel once more, take a look at the Water Lilies and other aquatic

plants present in the ponds. Follow the trail and turn right at the first turning. A little further along, an observation point will invite you to discover a clearing. This area was cleared in the 1990's by the Conservatoire d'Espaces Naturels de Picardie, with the aim of helping plants that were extinct to the area flourish once more - a successful gamble!

... to the heart of the marshlands

As you follow the trail, you will pass by some heaps of strimming waste; in a few years this waste will have turned into compost soil. Continue straight on and follow the trail around Colette Pond.

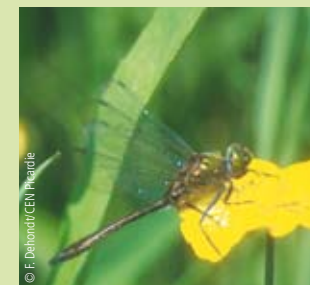


Here you will see the Moorhens, Coots and Mallard Ducks resting or feeding. The biodiversity of the site is remarkable: under water, on the water, in the air, on land - wildlife is developing, multiplying - a good sign of nature being preserved!

During the good weather the Greater Spearwort, a kind of giant buttercup, flowers spectacularly. Many insects benefit from these areas as well, such as the Downy Emerald, a wonderful dragonfly, and also birds like Little Bitterns and Herons which nest around the ponds.

A guide booklet is available at the Town hall or at the Conservatoire.

234 different plants have been counted here. Amongst them: 34 are rare and exceptional to Picardy and 9 are protected species. About 10 different species of peat moss have colonised the wet zones and have made this site one of the richest of the region.



Downy Emerald on a Greater Spearwort flower; once its aquatic life is over, the larvae climb along a stem to emerge as dragonflies.

As well as the plants and flowers, the reserve also hosts a variety of animals. Some 90 different species of birds frequent the marshlands, such as: Great Crested Grebes, Coots and Moorhens. In the spring and summer, 33 different types of dragonfly, and as many butterflies, can be seen. **Be attentive and admire the nature!**